

Product Overview



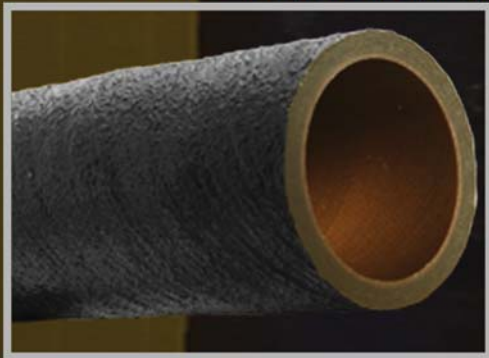
Epoxy Resin Systems

Conley Aromatic amine cured epoxy resin systems perform best in caustics, brines, solvents and many acids up to an operating temperature of 275°F (Conductive system available). E-Plus, Conley's proprietary premium epoxy has outstanding chemical resistance to 98% sulfuric acid and aggressive solvents such as acetone, chloroform and methylene chloride up to an operating temperature of 275°F. See chemical resistance guide for more information.

Vinyl Ester Resin Systems

Conley 441 - 400 vinyl ester performs best in acids, alkali, brines with improved performance in solvents up to 245°F. Conley's 470 Novolac resin has excellent resistance to acidic and oxidizing agents such as aqueous chlorine and chlorine dioxide up to 290°F. Conductive systems available in both resins. See chemical resistance guide for more information.

Epoxy - Aromatic Amine Cured
- E-Plus™ (Proprietary Epoxy)



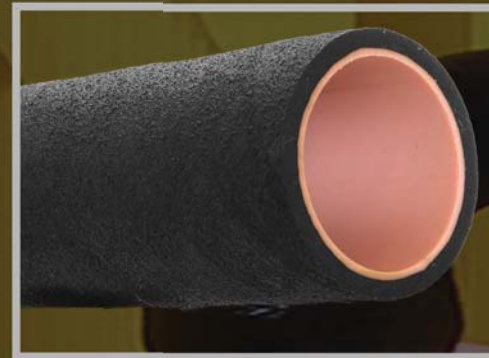
Furan

Vinyl Ester - Premium 441 - 400

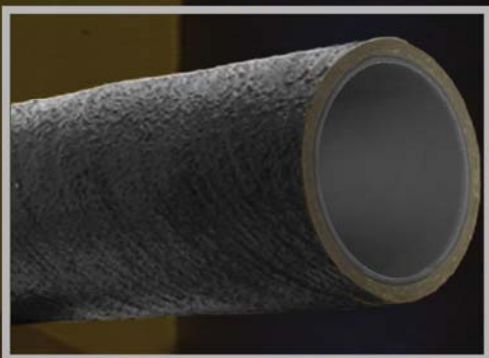


Epoxy or Vinyl Ester
FGD Abrasion Resistant

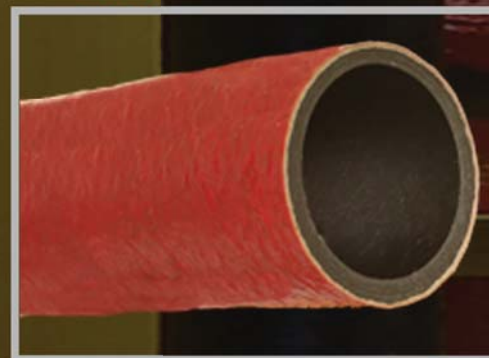
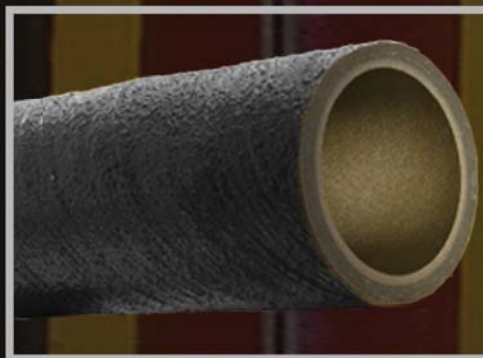
Vinyl Ester - 470 Novolac



Epoxy - Marine & Offshore



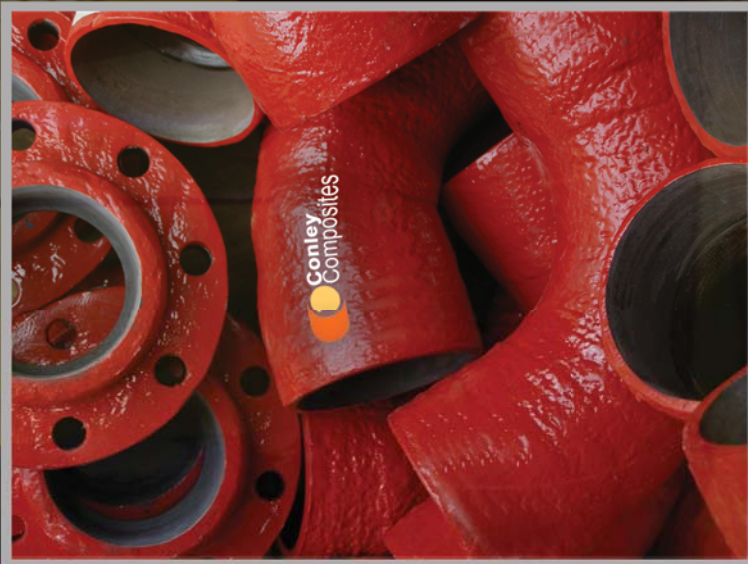
Epoxy or Vinyl Ester
Double Containment System



Specialty Piping Systems

Conley Furan resin is designed for aggressive chlorinated solvents and performs well in acidic and alkali media as well. Furan is available with a conductive system that is widely used in the pharmaceutical industry. Conley's heavy duty FGD pipe has a thick barrier of resin filled with silicon carbide for increased abrasion resistance. Conley's Marine and Offshore pipes Type Approved for Level 3 (L3), level 3 wet/dry (L3 W/D) and Level 0 (0) fire endurance rating. Conley also manufactures a complete double contained piping system for those applications requiring maximum environmental security against pipeline leaks.

Pipe & Fittings



The Conley (3) Stage System

Conley products all begin with Premium epoxy or vinyl ester resins in its exclusive three stage process. (Stage 1) We add multiple layers of Nexus synthetic veil reinforcement saturated with aromatic amine cured premium epoxy, vinyl ester or Furan resin for a rich corrosion barrier. Our resin rich liner is 90% resin and 10% veil reinforcement for a combination of superior chemical resistance and impact resistance. (Stage 2) Over the resin rich liner is an aromatic amine cured epoxy filament wound reinforced wall of multi-layered continuous glass delivered under controlled tension for optimum hoop and axial strength. The last stage, epoxy resin rich Nexus layers are added to the exterior to provide maximum corrosion resistance, impact resistance and aids to eliminate fiber blooming caused by the damaging effects of ultraviolet (UV) exposure. No other composite pipe/fitting manufacturer offers the benefits of a Conley piping system.

General Pipe Data

	Pipe Series	Size Range	Inner Corrosion Barrier	** Pressure Rating	Temperature Rating
Epoxy Aromatic Amine or *E-Plus (Proprietary Epoxy)	30-60	2" - 30"	.060"	250psi	275°F
	40-60	1" - 30"	.060"	300psi	275°F
	50-100	1" - 30"	.100"	250psi	275°F
Vinyl Ester 441 or Novolac 470	30-60	2" - 30"	.060"	250psi	245 / 290°F
	40-60	1" - 30"	.060"	300psi	245 / 290°F
	50-100	1" - 30"	.100"	250psi	245 / 290°F
Furan	40-60	1" - 30"	.60"	300psi	235°F
FGD Epoxy or Vinyl Ester	50-100	1" - 30"	.100"	250psi	245 / 275°F
Marine - Offshore Epoxy	90-60	1" - 20"	.060"	150/250psi	235°F
Double Contained Epoxy or Vinyl Ester	30/30-60/60	2" - 24"	.060"/.060"	150psi	245 / 275°F
	40/30-60/60	2" - 24"	.060"/.060"	150psi	245 / 275°F
	50/30-100/60	2" - 24"	.100"/.060"	150psi	245 / 275°F

*E-Plus is available in pipe series 40-60 & 50-100 only.

**Pressure ratings are pipe size specific. Please refer to specification sheets.

The Largest "Standard Product" Size Range in the Industry

Composite Accessories



Composite Flanged & Wafer
Swing Check Valves
& Ball Check Valves
Size Range 1" - 30"



Composite
Butterfly Valves
Size Range 2" - 48"



Composite Flanged PTFE
Expansion Joints
Size Range 1" - 42"



Composite Flanged
360° View Sight Gauges
Size Range 1" - 12"



Composite Ball Valves
Size Range 1" - 10"



Composite
In-line & Y Strainers
Size Range 1-1/2" - 30"



Composite
Floor Drains
Size Range 3" - 12"



Composite
Diaphragm Valves
Size Range 1" - 6"



Conley Composites LLC, information is based on technical data and testing that Conley Composites believes to be reliable and is subject to change without notice. The information is intended for use by persons having technical skill, at their own discretion and risk. Since conditions of product are outside of Conley Composites control, Conley Composites makes no warranties, expressed or implied and assumes no liability in connection with any use of this information.