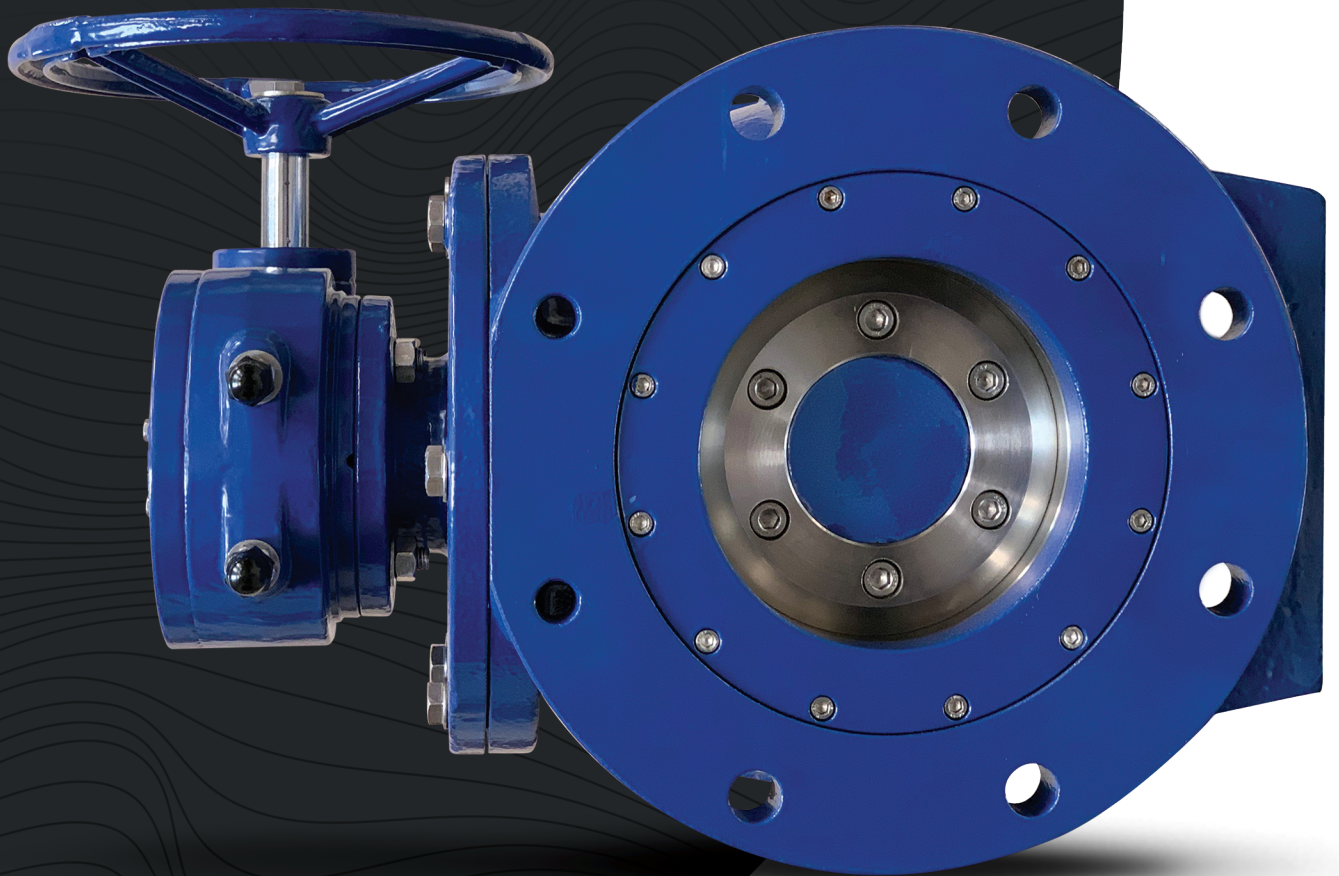


# METAL SEATED BALL VALVE

**SIZES: 6" - 72"**



 **J&S Valve**

# SERIES 5000 METAL SEATED BALL VALVE

## DESIGN FEATURES

The JSV Metal Seated Ball Valve has a full-port area equal to the nominal size of the valve which creates similar headloss as an equal length of straight pipe. This lowers pumping cost by reducing energy consumption. The JSV Metal Seated Ball Valve operates equally well in both high and low velocity conditions minimizing cavitation concerns. Ideal for water and wastewater pumping service and excellent for throttling and isolation application.

The unique razor sharp Type 316 Stainless Steel Valve Rotor Seat and the "Nitronic 60" Body Seats do not require line pressure assistance to provide a tight, zero-leakage seal. The JSV Metal Seated Ball Valve has an offset design which eliminates contact between the metal seats until the actual point of closure; extending the seat life of the valve. Both the Rotor Seat and the Body Seats are mechanically retained with Type 316 Stainless Steel NYLOK bolts. This design allows for easy field replacement, if ever needed, making the JSV Metal Seated Ball Valve an everlasting, low maintenance, energy efficient, and cost-effective valve choice for a flow control valve, as well as, a shut-off valve.

### BODY

Ductile Iron ASTM A536 Grade 65-45-12

### VALVE ROTOR

Ductile Iron ASTM A536 Grade 65-45-12

### VALVE ROTOR SEAT

316 Stainless Steel

### SEAT RETAINING BOLTS

316 Stainless Steel, Nylok Coated

### BODY SEAT

Nitronic-60; Non-Galling Stainless Steel

### COATING

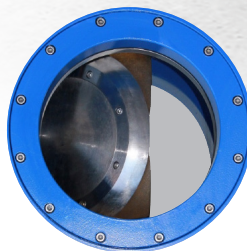
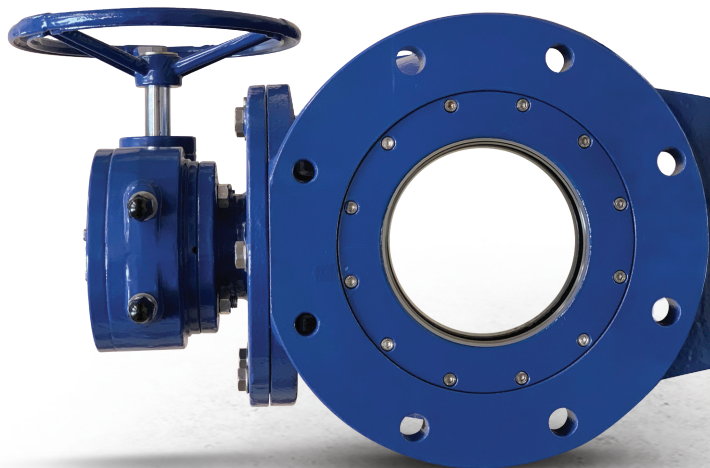
Fusion Bonded Epoxy NSF-61 Certified  
Inside and out per AWWA C550

### FLANGE CLASS

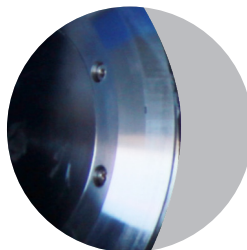
ANSI B16.1 125 or 250

### SIZE

6" through 72"



**FULL ROUND PORT  
100% NOMINAL PORT SIZE**



**FIELD ADJUSTABLE  
& REPLACEABLE SEATS!**



CLASSIFIED  
WATER QUALITY  
ANSI/NSF 61  
ANSI/NSF 372



AWWA  
Compliant

# **SERIES 5000 METAL SEATED BALL VALVE SPECIFICATION**

## **MAIN VALVE**

The Main Valve shall have a full, circular, unobstructed waterway, and be trunnion - mounted, metal to metal seated, in complete conformance with the requirements of AWWA C507 and American Iron and Steel Act.

## **VALVE BODY**

The Valve Body shall be Ductile Iron ASTM 536 Grade 65-45-12 . The flange ends Shall be ANSI B16.1 Class 125 or 250 and shall have a true 100% full circular port opening equal to the nominal size of the valve.

## **VALVE ROTOR**

The Ball Valve Rotor shall be one-piece cast Ductile Iron ASTM 536 grade 65-45-12 with two Stainless Steel or Bronze bushed trunnions and provide 100% full circular port opening equal to the nominal size of the valve.

## **VALVE BODY SEAT**

Body Seat shall be Nitronic 60 Non-galling Austenitic Stainless Steel mechanically retained with 304 or 316 Stainless Steel NYLOK Bolts and shall be field replaceable.

## **VALVE ROTOR SEAT**

The Seat on the Rotor shall be a single, rigidly mounted, adjustable, corrosion resistant metal seat of 316 Stainless Steel mechanically retained on the Ball Valve Rotor. The Seating surface shall be spherically generated on an eccentric seating axis providing long life by virtually eliminating seat contact with the body seat during operation until final closure of the valve.

## **VALVE SHAFT**

The Operating Shaft shall be high strength high alloy stainless steel per ASTM A564 Type 17-4 PH double aged harden HI-150, turned, ground, pressed fit and locked with high strength stainless steel pins into the Ball Rotor Trunnion. The Shaft will be sealed with a set of replaceable Chevron Type Vee-packing capable of being replaced without removing the valve from the line.

## **SURFACE PREPARATION AND SHOP COATING**

All Coating and Lubricants in contact with potable water shall be NSF 61 Certified.

## **MANUFACTURE**

Manufacture shall demonstrate 10 years of experience in the manufacture of Water Works Valves sizes 2" -72". Metal Seated Ball Valves Series 5000 shall be manufactured by J&S Valve, Huffman Texas, USA or preapproved equal.

# IMPROVING THE INDUSTRY STANDARD.



## INSTALL RELIABILITY. INSTALL J&S VALVE

J&S Valve shows its commitment to providing quality products by manufacturing with highest grade materials and extensive testing of its valves. J&S is a leader in the Waterworks Industry. We provide products and services that consistently exceed our customers' needs as they relate to quality, performance, dependability, operation, and delivery.



2323 1st Street Huffman, Texas 77336

T: 281.324.3990 | F: 281.324.6879 | E: [Sales@jandsvalve.com](mailto:Sales@jandsvalve.com)

[JANDSVALVE.COM](http://JANDSVALVE.COM)