



SVF Flow Controls

VALVES • ACTUATORS • CONTROLS

HIGH PERFORMANCE SERIES



SERIES R8 / B8
High Performance Ball Valve
Full/Standard Port
Sizes from 1/4" to 3"
*(Available with Stainless Steel,
Carbon Steel, Alloy 20 or Hastelloy
Materials)*



SERIES R9 / B9
Direct Mounting Pad
Full/Standard Port
Sizes from 1/2" to 2"



SERIES L8
Instrumentation Ball Valve with
Compression Ends
Sizes from 1/4" to 1"



SERIES F9 / FB9
Fire-Safe API 607
Full/Standard Port
Sizes from 1/4" to 2"



SERIES D8 / T7
Diverter/3-Way
Bottom Port
Sizes from 1/4" to 2"

HIGH PRESSURE SERIES



SERIES H7
High Pressure Ball Valve
Standard Port 6000 psi
Sizes from 1/2" to 2"



SERIES P4
High Pressure Ball Valve
Standard Port 5000 psi
Sizes from 1/2" to 1"



SERIES HBEV
Seal Welded Ball Valve
Fire-Safe API 607
Full Port 6000 psi
Sizes from 1/2" to 2"



SERIES B43C
ANSI Class 600
Fire-Safe API 607
Full Port
Sizes from 1/2" to 8"



SERIES B42C
ANSI Class 300
Fire-Safe API 607
Full Port
Sizes from 1/2" to 8"

FLANGED SERIES



SERIES B40
ANSI Class 150
Full Port
Sizes from 1" to 6"



SERIES 41C
ANSI Class 150
Fire-Safe API 607
Standard Port
Sizes from 1/2" to 6"



SERIES B41C
ANSI Class 150
Fire-Safe API 607
Full Port
Sizes from 1/2" to 8"

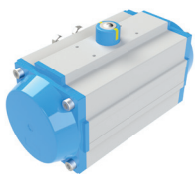


SERIES VB41
Characterized Control "V"
Flanged Ball Valve
Sizes from 1/4" to 3"

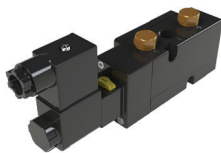


SERIES MB51
ANSI Class 150
Multi-Port
Sizes from 1" to 6"

ACTUATORS AND CONTROLS



EZ-Tork
Pneumatic Actuator



VECTOR Series
Pilot Valves



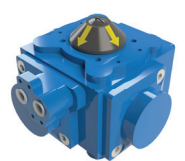
E-Series
Electric Actuator



NEXUS-LP/LPX
Discrete Valve
Controller



EXACT XL / P3
Pneumatic / Electro-
Pneumatic Positioner



Quad4
Pneumatic Actuator

SVF Flow Controls | 5595 Fresca Drive, La Palma, CA 90623

Phone: 562.802.2255 | www.SVF.net

Sales & Support: Sales@SVF.net | Engineering@SVF.net



SVF Flow Controls

VALVES • ACTUATORS • CONTROLS

SPECIALTY VALVE SERIES



SERIES N8/BN8
Steam and Thermal Fluid
Standard/Full Port
Sizes from 1/4" to 3"



SERIES V8
Characterized Control
"V" Ball Valve
Sizes from 1/4" to 3"



SERIES C8
Chlorine Service
Standard Port
Sizes from 1/4" to 2"



SERIES 7B41
Hydrogen Peroxide
ANSI Class 150
Full Port Ball Valve
Sizes from 1/2" to 8"



SERIES K8
Cryogenic
Standard Port
Sizes from 1/2" to 4"

GENERAL PURPOSE SERIES



SERIES 15SS
One Piece Valve
Standard Port
Sizes from 1/4" to 2"



SERIES 20SS
Two Piece Valve
Full Port
Sizes from 1/4" to 3"



SERIES 30SS
Three Piece Valve
Full Port
Sizes from 1/4" to 4"



SERIES MZ9
Multi-port/ Full Port
Sizes from 1/2" to 2"



SERIES BZ9
Bronze Ball Valve
Full Port
Sizes from 1/2" to 2"



SERIES SL
StreamLine Series
Butterfly Valve
Sizes from 2" to 24"



SERIES 500F
Forged Gate Valve
Sizes from 1/4" to 2"



SERIES 505F
Forged Globe Valve
Sizes from 1/4" to 2"



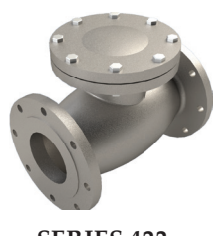
SERIES 522F
Forged Check Valve
Sizes from 1/4" to 2"



SERIES 400
Cast Steel ANSI Class
150 Gate Valve
Sizes from 2" to 12"



SERIES 405
Cast Steel ANSI Class
150 Globe Valve
Sizes from 2" to 12"



SERIES 422
Cast Steel ANSI Class
150 Check Valve
Sizes from 2" to 12"



The *CleanTECH* product line is designed for applications in the Food and Beverage, Flavors and Fragrances, and Semi-conductor industries.



SERIES SB9B
Sanitary Ball Valve
Tube I.D. Port
Sizes from 1/2" to 4"



SERIES SB9
Sanitary Ball Valve
Tube I.D. Port
Sizes from 1/2" to 4"



SERIES SMC9
Sanitary Ball Valve
Multi-Port
Sizes from 1/2" to 4"